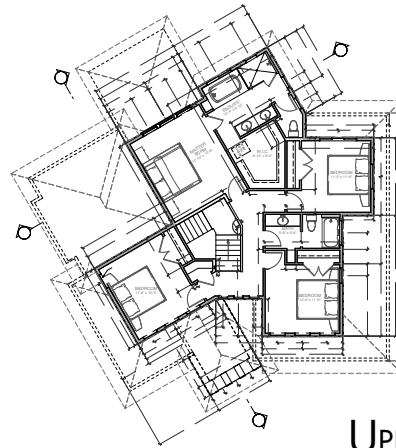


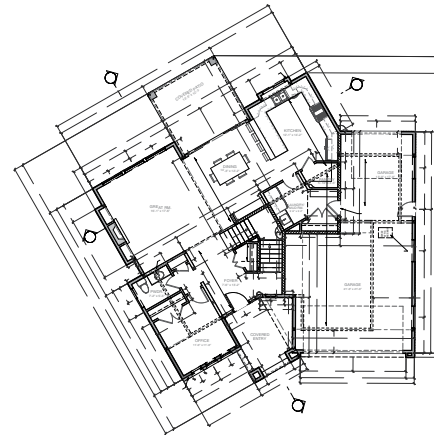


FRONT ELEVATION

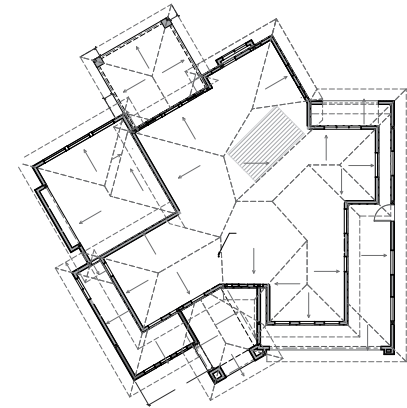
- 2533 sq.ft. of open concept living on two levels
- 1078 sq.ft. of framed unfinished basement, designed with 2 bedrooms, 3 piece bath, large rec. room/ games room, wet bar and wine room
- Large master bedroom with mountain view plus additional 3 bedrooms up
- Custom 5 piece en-suite with granite counter tops and large walk-in closet
- 740 sq. ft. triple garage with flat exposed aggregate driveway
- Custom kitchen with 1 piece granite counters tops
- Stainless steel appliance package and pro series 6 burner range
- 3 bathrooms plus future bath in basement
- Huge mudroom/ laundry and walk-in pantry
- Grand 12'6"ft ceilings in great room
- Large covered back patio with natural gas BBQ hook-up
- High-efficiency fireplace with impressive custom built-ins
- 95% high efficiency gas furnace with central air
- Hardwood, tile and carpet flooring through out
- Wood front door, Acrylic stucco and stone work according to plan
- Built-in speakers on main floor and master en-suite
- 9ft ceilings in basement
- Rough-in for vacuum and alarm system
- Large backyard suitable for pool - a kids and entertainers dream yard
- Professionally landscaped and timed underground irrigation
- Expected finish date September 2014
- Designer ready, come pick your colors and finishing's



UPPER FLOOR



MAIN FLOOR



UNFINISHED BASEMENT

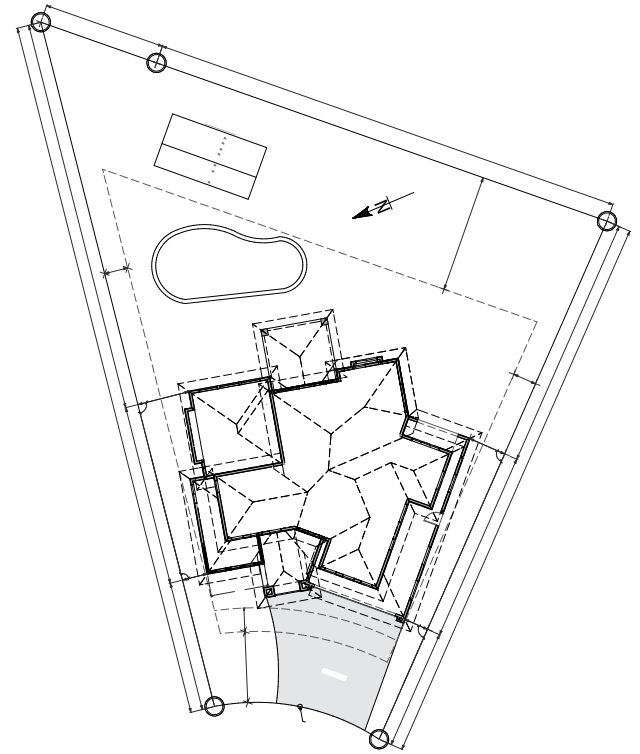
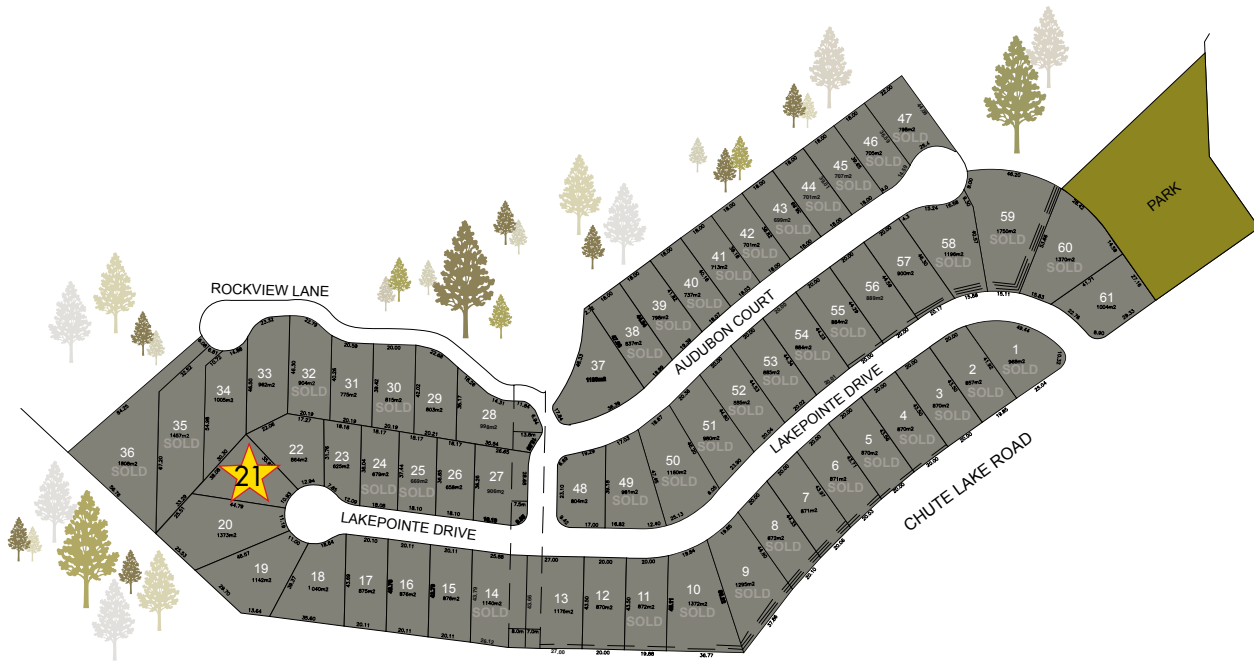
Offered at \$795, 000

Note: Price subject to applicable tax.



THE POINTE LOT 21 - 459 LAKEPOINTE DRIVE

www.kettlevalley.com



250.764.2199



discoverycentre@kettlevalley.com
www.kettlevalley.com